



XGMA

High-end

Interactive Test Equipment

For Today's and Tomorrow's Mobile
Networks



The Multi-Talent.

Collect Data. Benchmark. Generate load. Analyze. Visualize. Optimize and report. Connect any number of devices. XGMA can do it all. It's made for any technology. For today and tomorrow. It gives you the competitive edge you need in a challenging market and the resources to satisfy your customers' expectations. To put it simply: An exceptionally talented all-rounder.



Focus Infocom

Your Measurement Solution

Easy

Data collection made easy with user-configurable views, Quick Start button and different user modes. Start right now with monitoring and optimizing your network.

Smartphone-based

Connect any number of smartphones for benchmarking, add modems for reference purposes or even scanners: XGMA is the most versatile solution available.

Performing

All major technologies and a plethora of CS and PS services are supported, making XGMA the ideal solution for now and the future.

All-in-one

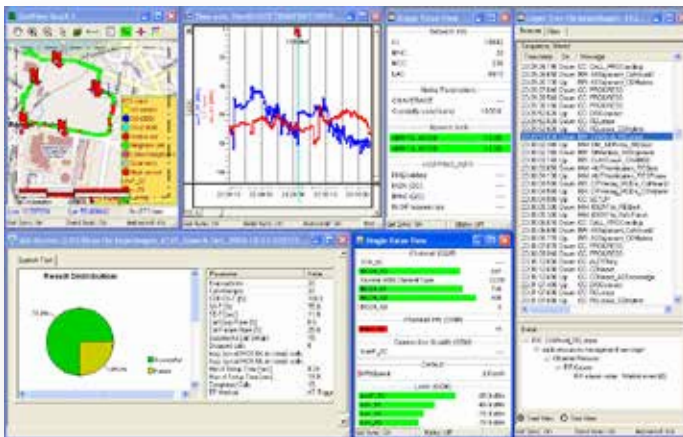
XGMA covers all your measurement needs: From data collection and visualization right down to benchmarking and in-depth analysis.

Synchronized

All views are automatically synced to always reveal a complete picture of data and related events.

Illuminating

Information at a glance with fully synchronized GeoView and time axis visualizations as well as multi-level message browsers.



XGMA Analyzer, XGMA Visual Pocket on Samsung S3 and XGMA Smartphone as backpack version: XGMA integrates measurement, post processing and reporting in one powerful tool.



Adaptable

Adapt the GUI to your workflow with the Workspace and Layout Managers. Share workspaces and layouts or re-apply them to other data.

Professional

Create professional, appealing reports based on QoS ETSI KPI with Microsoft Excel and Crystal Reports®.

Communicative

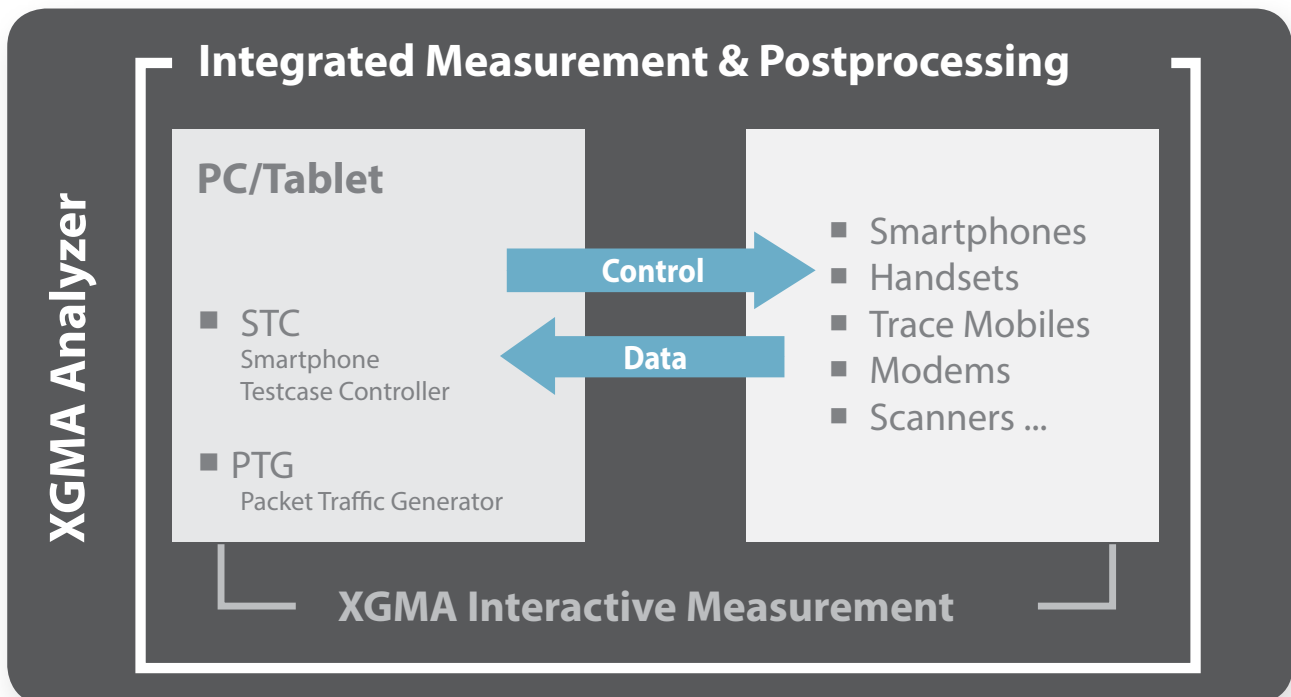
Analyze your data with Focus Infocom's or third party products thanks to XGMA's open data architecture and numerous export functions.

Visual Pocket

XGMA Visual Pocket is an option that lets you disconnect individual smartphones from the system for pocket use while preserving all the powerful features of XGMA Smartphone.

Power Features

- LTE™ ready
- Optional smartphone-based benchmarking in different versions
- Numerous service tests for voice and data including POLQA® and Multi-RAB
- 1-click QoS reports
- FITA automatic call analysis
- A single tool for data collection, post processing and reporting
- XGMA Visual Pocket for maximum all-terrain mobility including mobile data visualization



XGMA

Specifications

Supported Devices

Fully Smartphone-based (tests run on smartphone):

- Android 2.2 and 2.3 smartphones
- Android 3.0 tablets
- Android 4.0

Commercial Handsets and Modems

- Most modern mobiles in tethered mode
- Full support of QoS testing (customer perspective)

Trace Mobiles:

- Nokia: C5, C5-5MP, C7, N900, N85, N95, 6720
- Many handsets and modems with Qualcomm® chipsets (L3 Trace)

Data Modems:

- Huawei: E176 (HSPA), E182 (HSPA+), E398 (LTE™)
- Sierra Wireless: 87xx (HSPA+), 77xx (LTE™)
- Others on request

Scanners:

- Scanning Handsets
- Rohde&Schwarz: TSMW®
- P/N Scanner type PCTEL®
- P/N Scanner other types (optional)
- LAN Mode (enables Hotspot/WiMAX QoS testing)

Supported Technologies

GSM, GPRS, EDGE, UMTS, HSDPA, HSUPA, HSPA+, LTE™, GSM-R, TETRA

Measurement Data

IP trace data, detailed session events, GPS data, voice & video quality data

QoS/Service Tests

KPI according to ETSI and beyond

Voice:

- MOC, MTC
- ITU-T P 862.1 (PESQ®)
- ITU-T P 863 (POLQA®)
- Voice over IP (Skype™ etc.)/OTT: task specific
- Further Services (e.g. voicemail, video telephony) on request
- VoLTE ready

Data:

- Web browsing (various browsers)
- HTTP up- and download
- Web 2.0*
- FTP up- and download
- PING
- UDP on request

Messaging:

- Email (POP3, SMTP, IMAP)*
- SMS*
- MMS*

Streaming:

- Video streaming (YouTube® etc.)
- Video streaming MOS
- Mobile TV*
- Web Radio*

Visualizations

Multitudinous data visualizations including:

- Geo Views
- Multi-track Time Axis
- Single Value
- Data Table
- Excel View
- Layer 3 Decoder
- RLC/MAC Decoder
- QoS Monitor
- Alarming
- Waypoints
- Root Cause Analysis
- Phone based scanning
- GSM, WCDMA, LTE Scanner View
- Scatter View
- Google Earth
- Open Street Map

Analysis Functions

XGMA offers a wide range of analysis functions including:

- FITA Auto Call Problem Analysis
- SIB Analysis
- Technical Reporting
- Handover Analysis
- RRC Analysis
- GSM L3 Analysis
- Full Text Finder for 2G and 3G Layer Messages

Report Functions

- High-level QoS Reports
- Time-Profile View
- Transaction View
- User and technical View KPI
- Integrated Microsoft® Excel®-based reporting
- Integrated Crystal Reports®

User Interface

- Numerous predefined workspaces and layouts, fully customizable, reusable and shareable
- Quick Start button
- Easy to use GUI

Versions

XGMA is available in different versions: from basic cost-effective standalone installations to full-featured multi-device editions, plus Analyzer versions for visualization, reporting and data analysis only. Also available: Visual Pocket, an option that lets you disconnect smartphones for independent measurement right in your pocket.

Contact Focus Infocom to find the solution that best fits your needs.

* Service support depending on devices
Specifications subject to change without notice.